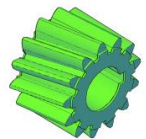
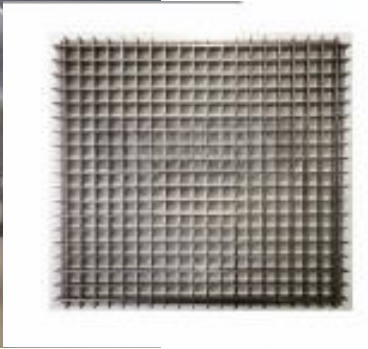
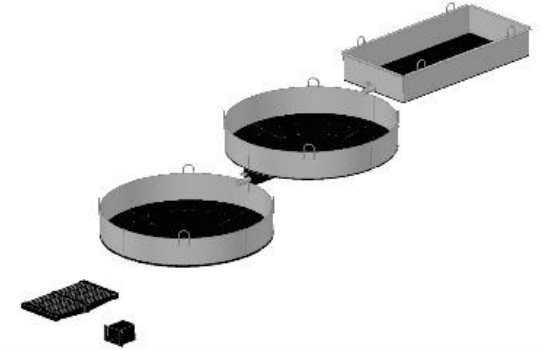


## **MACHINERY DETAILS FOR DIFFERENT MODELS OF JAGGERY UNITS**

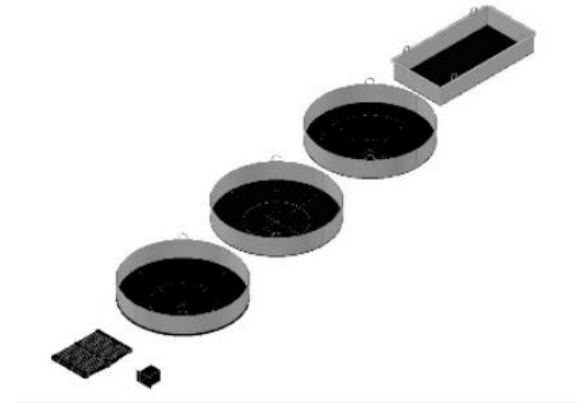
Particulars	15 TCD - LOW CAPACITY UNIT	RATE
<b>TCD</b>	<b>650-750 Kgs Per Hour</b>	
<b>CRUSHING UNIT</b>	Sugarcane Crusher with Helical Gear Box - size- 8.5" x 8.5" - 7.5 H.P. - 1 Nos. Complete Set	<b>3,35,000.00</b>
<b>FILTRATION &amp; CLARIFICATION UNIT</b>	M.S Tapper Filter Tank With 10 mesh Screen – 1 Nos	<b>18,500.00</b>
<b>BOILING UNIT &amp; JAGGERY TOOLS</b>	3 Open Pan – 1 set Jaggery Tools	<b>2,65,000.00</b>
<b>COOLING, MOULDING AND PACKAGING UNIT</b>	Stainless Steel Cooling Pan – 1 Nos. S.S. Jaggery Moulding frame (20 Grams) – 2 Sets Jaggery Mould Table – 1 Nos. Jaggery pouch sealing machine – 1 Nos	<b>1,42,500.00</b>
<b>LABORATORY EQUIPMENT</b>	- - - - -	
<b>SPARES</b>	Necessary Spare	<b>12,500.00</b>
<b>TOTAL COST OF EQUIPMENT'S</b>		<b>7,73,500.00</b>
<b>TRANSPORTATION</b>		<b>95,000.00</b>
<b>ERECTION, COMISSIONING &amp; SUCCESSFUL TRIAL</b>		<b>1,50,000.00</b>
<b>GST ( 18%)</b>		<b>1,83,330.00</b>
<b>TOTAL COST</b>		<b>12,01,830.00</b>
<b>CLIENT SCOPE</b>	<ul style="list-style-type: none"> <li>➤ Off loading, Safe storage of Sent Material.</li> <li>➤ Local Labour, Massonry Work Professionals ( Raj Mishtri )</li> <li>➤ Fire proof Bricks &amp; Fire Proof Cement For Kiln</li> <li>➤ Sand, Cement, Bricks and All other construction raw material for Crusher Foundation, Filtration Unit, Furnace &amp; Chimney, Moulding Etc.</li> <li>➤ Civil Work &amp; RCC work for Milling, Boiling &amp; Moulding + Shed</li> <li>➤ Crane, JCB For Installation of all the machineries.</li> <li>➤ Water.</li> <li>➤ Electric Connection &amp; Lighting</li> <li>➤ Sugarcane, Bagasse &amp; All other Necessary material for Trial.</li> <li>➤ Co-operation</li> </ul>	Client's Scope

\*TERMS&CONDITIONS APPLY



Particulars	21 TCD – MEDIUM CAPACITY UNIT - OPTION - 1	RATE
<b>TCD</b>	<b>750-850 Kgs Per Hour</b>	
<b>CRUSHING UNIT</b>	Sugarcane Crusher with Helical Gear Box – size- 9.5” x 9.5” – 12.5 H.P. – 1 Nos. Complete Set	<b>4,25,000.00</b>
<b>FILTRATION &amp; CLARIFICATION UNIT</b>	Vibro Filter – 1 Nos	<b>2,65,500.00</b>
<b>BOILING UNIT &amp; JAGGERY TOOLS</b>	4 Open Pan – 1 set Jaggery Tools – 1 Set	<b>3,65,000.00</b>
<b>COOLING, MOULDING AND PACKAGING UNIT</b>	Stainless Steel Cooling Pan -1 Nos. S.S. Jaggery Moulding frame ( 10 Gram & 20 Gram ) – 2+2 Sets Jaggery pouch sealing machine – 1 Nos + Shrink Machine – 1 Nos. Jaggery Mould Table – 2 Nos. & Weighing Scale – 1 Nos	<b>2,55,000.00</b>
<b>LABORATORY EQUIPMENT</b>	Portable PH Meter – 1 Nos, Portable Brix Meter – 1 Nos Infra – red Temperature Recorder – 1 Nos, Portable Moisture Meter – 1 Nos	<b>50,000.00</b>
<b>SPARES</b>	Necessary Spare	<b>15,500.00</b>
<b>TOTAL COST OF EQUIPMENT'S</b>		<b>13,76,000.00</b>
<b>TRANSPORTATION</b>		<b>1,05,000.00</b>
<b>ERECTION, COMISSIONING &amp; SUCCESSFUL TRIAL</b>		<b>1,75,000.00</b>
<b>GST ( 18%)</b>		<b>2,98,080.00</b>
<b>TOTAL COST</b>		<b>19,54,080.00</b>
<b>CLIENT SCOPE</b>	<ul style="list-style-type: none"> <li>➤ Off loading, Safe storage of Sent Material.</li> <li>➤ Local Labour, Massonry Work Professionals ( Raj Mishtri )</li> <li>➤ Fire proof Bricks &amp; Fire Proof Cement For Kiln</li> <li>➤ Sand, Cement, Bricks and All other construction raw material for Crusher Foundation, Filtration Unit, Furnace &amp; Chimney, Moulding Etc.</li> <li>➤ Civil Work &amp; RCC work for Milling, Boiling &amp; Moulding + Shed</li> <li>➤ Crane, JCB For Installation of all the machineries.</li> <li>➤ Water.</li> <li>➤ Electric Connection &amp; Lighting</li> <li>➤ Sugarcane, Bagasse &amp; All other Necessary material for Trial.</li> <li>➤ Co-operation</li> </ul>	Client's Scope

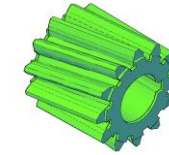
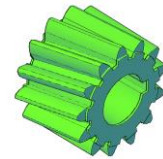
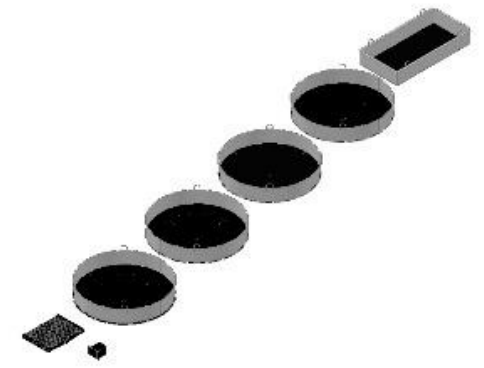
\*TERMS&CONDITIONS APPLY



Particulars	30 TCD - MEDIUM CAPACITY UNIT - OPTION - 2	RATE
TCD	<b>950-1050 Kgs Per Hour</b>	
CRUSHING UNIT	Sugarcane Crusher – Double Coupling with Helical Gear Box – size- 12” x 10.5” – 20 H.P. – 1 Nos. Complete Set	<b>5,80,000.00</b>
FILTRATION & CLARIFICATION UNIT	Vibro Filter – 1 Nos	<b>2,95,000.00</b>
BOILING UNIT & JAGGERY TOOLS	5 Open Pan – 1 set Jaggery Tools – 1 Set	<b>4,05,000.00</b>
COOLING, MOULDING AND PACKAGING UNIT	Stainless Steel Cooling Pan -1 Nos. S.S. Jaggery Moulding frame ( 20 Gram ) – 4 Sets Jaggery pouch sealing machine – 1 Nos + Shrink Machine – 1 Nos. Jaggery Mould Table – 2 Nos. & Weighing Scale – 1 Nos	<b>2,75,000.00</b>
LABORATORY EQUIPMENT	Portable PH Meter – 1 Nos, Portable Brix Meter – 1 Nos Infra – red Temperature Recorder – 1 Nos, Portable Moisture Meter – 1 Nos	<b>50,000.00</b>
SPARES	Necessary Spare	<b>17,500.00</b>
TOTAL COST OF EQUIPMENT'S		<b>16,22,500.00</b>
TRANSPORTATION		<b>1,15,000.00</b>
ERECTION, COMMISSIONING & SUCCESSFUL TRIAL		<b>1,95,000.00</b>
GST ( 18%)		<b>3,47,850.00</b>
TOTAL COST		<b>22,80,350.00</b>
CLIENT SCOPE	<ul style="list-style-type: none"> <li>➤ Off loading, Safe storage of Sent Material.</li> <li>➤ Local Labour, Massonry Work Professionals ( Raj Mishtri )</li> <li>➤ Fire proof Bricks &amp; Fire Proof Cement For Kiln</li> <li>➤ Sand, Cement, Bricks and All other construction raw material for Crusher Foundation, Filtration Unit, Furnace &amp; Chimney, Moulding Etc.</li> <li>➤ Civil Work &amp; RCC work for Milling, Boiling &amp; Moulding + Shed</li> <li>➤ Crane, JCB For Installation of all the machineries.</li> <li>➤ Water.</li> <li>➤ Electric Connection &amp; Lighting</li> <li>➤ Sugarcane, Bagasse &amp; All other Necessary material for Trial.</li> <li>➤ Co-operation</li> </ul>	Client's Scope

\*TERMS&CONDITIONS APPLY



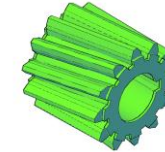
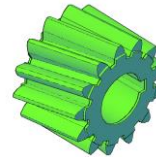
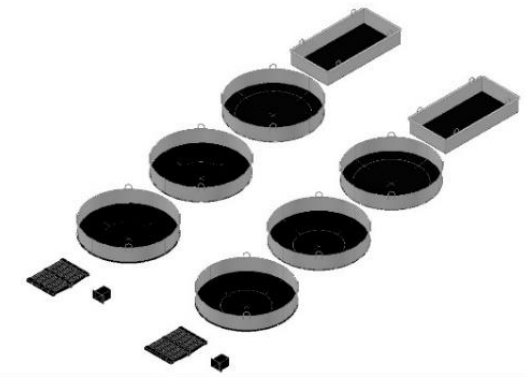


Particulars	35 - 40 TCD - MEDIUM CAPACITY UNIT - OPTION - 3	RATE
<b>TCD</b>	<b>1350-1450 Kgs Per Hour</b>	
<b>CRUSHING UNIT</b>	Sugarcane Crusher - Double Coupling with Helical Gear Box - size- 14" x 11" - 30 H.P. - 1 Nos. Complete Set	<b>7,65,000.00</b>
<b>FILTRATION &amp; CLARIFICATION UNIT</b>	Vibro Filter - 1 Nos	<b>3,35,000.00</b>

<b>BOILING UNIT &amp; JAGGERY TOOLS</b>	4 Open Pan – 2 set Jaggery Tools – 1 Set	<b>7,30,000.00</b>
<b>COOLING, MOULDING AND PACKAGING UNIT</b>	Stainless Steel Cooling Pan -1 Nos. S.S. Jaggery Moulding frame ( 10 Gram ) – 4 Sets S.S. Jaggery Moulding frame ( 20 Gram ) – 4 Sets Jaggery pouch sealing machine – 1 Nos + Shrink Machine – 1 Nos. Jaggery Mould Table – 2 Nos. & Weighing Scale – 1 Nos	<b>4,65,000.00</b>
<b>LABORATORY EQUIPMENT</b>	Portable PH Meter – 1 Nos, Portable Brix Meter – 1 Nos Infra – red Temperature Recorder – 1 Nos, Portable Moisture Meter – 1 Nos	<b>50,000.00</b>
<b>SPARES</b>	Necessary Spare	<b>26,500.00</b>
<b>TOTAL COST OF EQUIPMENT'S</b>		<b>23,71,500.00</b>
<b>TRANSPORTATION</b>		<b>1,35,000.00</b>
<b>ERECTION, COMMISSIONING &amp; SUCCESSFUL TRIAL</b>		<b>2,25,000.00</b>
<b>GST ( 18%)</b>		<b>4,91,670.00</b>
<b>TOTAL COST</b>		<b>32,23,170.00</b>
<b>CLIENT SCOPE</b>	<ul style="list-style-type: none"> <li>➤ Off loading, Safe storage of Sent Material.</li> <li>➤ Local Labour, Massonry Work Professionals ( Raj Mishtri )</li> <li>➤ Fire proof Bricks &amp; Fire Proof Cement For Kiln</li> <li>➤ Sand, Cement, Bricks and All other construction raw material for Crusher Foundation, Filtration Unit, Furnace &amp; Chimney, Moulding Etc.</li> <li>➤ Civil Work &amp; RCC work for Milling, Boiling &amp; Moulding + Shed</li> <li>➤ Crane, JCB For Installation of all the machineries.</li> <li>➤ Water.</li> <li>➤ Electric Connection &amp; Lighting</li> <li>➤ Sugarcane, Bagasse &amp; All other Necessary material for Trial.</li> <li>➤ Co-operation</li> </ul>	Client's Scope

\*TERMS&CONDITIONS APPLY



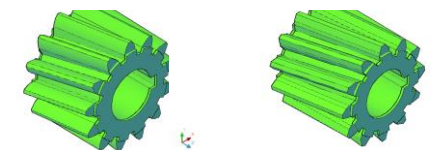
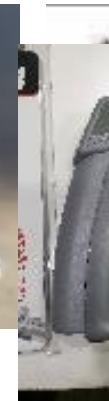
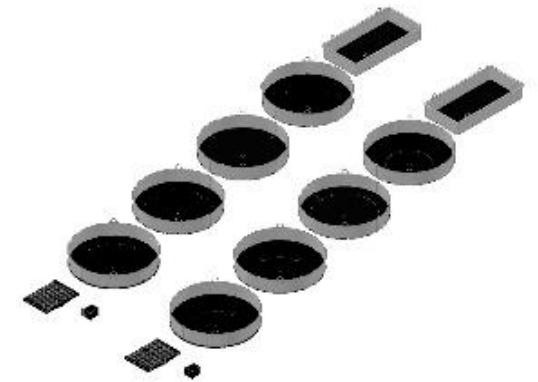
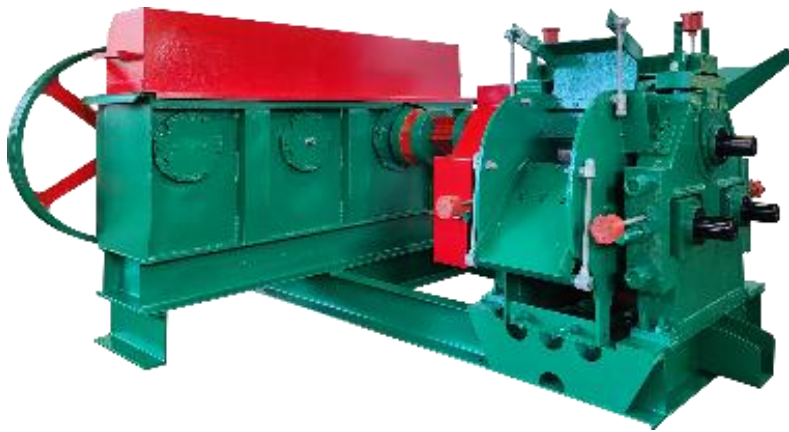


Particulars	41 - 45 TCD - HIGH CAPACITY UNIT - OPTION - 1	RATE
<b>TCD</b>	<b>1550-1650 Kgs Per Hour</b>	
<b>CRUSHING UNIT</b>	Sugarcane Crusher - Double Coupling with Helical Gear Box - size- 14" x 14" - 40 H.P. - 1 Nos. Complete Set	<b>11,25,000.00</b>
<b>FILTRATION &amp; CLARIFICATION UNIT</b>	Vibro Filter - 1 Nos	<b>3,35,000.00</b>



<b>BOILING UNIT &amp; JAGGERY TOOLS</b>	5 Open Pan – 2 set Jaggery Tools – 1 Set	<b>8,10,000.00</b>
<b>COOLING, MOULDING AND PACKAGING UNIT</b>	Stainless Steel Cooling Pan -1 Nos. S.S. Jaggery Moulding frame ( 20 Gram ) – 10 Sets Jaggery pouch sealing machine – 1 Nos + Shrink Machine – 1 Nos. Jaggery Mould Table – 2 Nos. & Weighing Scale – 1 Nos	<b>4,65,000.00</b>
<b>LABORATORY EQUIPMENT</b>	Portable PH Meter – 1 Nos, Portable Brix Meter – 1 Nos Infra – red Temperature Recorder – 1 Nos, Portable Moisture Meter – 1 Nos	<b>50,000.00</b>
<b>SPARES</b>	Necessary Spare	<b>34,500.00</b>
<b>TOTAL COST OF EQUIPMENT'S</b>		<b>28,19,500.00</b>
<b>TRANSPORTATION</b>		<b>1,55,000.00</b>
<b>ERECTION, COMMISSIONING &amp; SUCCESSFUL TRIAL</b>		<b>2,55,000.00</b>
<b>GST ( 18%)</b>		<b>5,81,310.00</b>
<b>TOTAL COST</b>		<b>38,10,810.00</b>
<b>CLIENT SCOPE</b>	<ul style="list-style-type: none"> <li>➤ Off loading, Safe storage of Sent Material.</li> <li>➤ Local Labour, Massonry Work Professionals ( Raj Mishtri )</li> <li>➤ Fire proof Bricks &amp; Fire Proof Cement For Kiln</li> <li>➤ Sand, Cement, Bricks and All other construction raw material for Crusher Foundation, Filtration Unit, Furnace &amp; Chimney, Moulding Etc.</li> <li>➤ Civil Work &amp; RCC work for Milling, Boiling &amp; Moulding + Shed</li> <li>➤ Crane, JCB For Installation of all the machineries.</li> <li>➤ Water.</li> <li>➤ Electric Connection &amp; Lighting</li> <li>➤ Sugarcane, Bagasse &amp; All other Necessary material for Trial.</li> </ul> <p>Co-operation</p>	Client's Scope

\*TERMS&CONDITIONS APPLY



Particulars	45 - 50 TCD - HIGH CAPACITY UNIT - OPTION - 2	RATE
<b>TCD</b>	<b>2400-2500 Kgs Per Hour</b>	
<b>CRUSHING UNIT</b>	Sugarcane Crusher – Double Mill with Planetary Gear Box & Motor - size- 14” x 11” - 30 + 30 = 60 H.P. – 1 Nos. Cane Carrier 20 Feet – 1 Nos, Auto Grease Lubricating System – 1 Nos Hydraulic Power Pack System – 1 Nos	<b>32,25,000.00</b>
<b>FILTRATION &amp; CLARIFICATION UNIT</b>	Vibro Filter – 1 Nos	<b>3,95,000.00</b>

<b>BOILING UNIT &amp; JAGGERY TOOLS</b>	Semi Automatic Jaggery Processing Unit – 2 set Jaggery Tools – 1 Set	<b>49,50,000.00</b>
<b>COOLING, MOULDING AND PACKAGING UNIT</b>	Stainless Steel Cooling Pan -1 Nos. S.S. Jaggery Moulding frame ( 10 Gram ) – 6 Sets S.S. Jaggery Moulding frame ( 20 Gram ) – 6 Sets Jaggery pouch sealing machine – 1 Nos + Shrink Machine – 1 Nos. Jaggery Mould Table – 2 Nos.& Weighing Scale – 1 Nos	<b>5,75,000.00</b>
<b>LABORATORY EQUIPMENT</b>	Portable PH Meter – 1 Nos, Portable Brix Meter – 1 Nos Infra – red Temperature Recorder – 1 Nos, Portable Moisture Meter – 1 Nos	<b>50,000.00</b>
<b>SPARES</b>	Necessary Spare	<b>34,500.00</b>
<b>TOTAL COST OF EQUIPMENT'S</b>		<b>92,29,500.00</b>
<b>TRANSPORTATION</b>		<b>3,00,000.00</b>
<b>ERECTION, COMMISSIONING &amp; SUCCESSFUL TRIAL</b>		<b>3,75,000.00</b>
<b>GST ( 18%)</b>		<b>17,82,810.00</b>
<b>TOTAL COST</b>		<b>1,16,87,310.00</b>
<b>CLIENT SCOPE</b>	<ul style="list-style-type: none"> <li>➤ Off loading, Safe storage of Sent Material.</li> <li>➤ Local Labour, Massonry Work Professionals ( Raj Mishtri )</li> <li>➤ Fire proof Bricks &amp; Fire Proof Cement For Kiln</li> <li>➤ Sand, Cement, Bricks and All other construction raw material for Crusher Foundation, Filtration Unit, Furnace &amp; Chimney, Moulding Etc.</li> <li>➤ Civil Work &amp; RCC work for Milling, Boiling &amp; Moulding + Shed</li> <li>➤ Crane, JCB For Installation of all the machineries.</li> <li>➤ Water.</li> <li>➤ Electric Connection &amp; Lighting</li> <li>➤ Sugarcane, Bagasse &amp; All other Necessary material for Trial.</li> <li>➤ Co-operation</li> </ul>	Client's Scope

\*TERMS&CONDITIONS APPLY

